

# Architettura Sonora

A red circle containing the white letters 'AS' in a bold, sans-serif font.

**AS**



# AS Natural shape of sound

**ARCHI-  
TETTURA  
SONORA**



**ARCHITETTURA SONORA**

Edition 2014

Archi




Architettura Sonora

## Architects of sound

Born with a mission “To get the best possible sound from the best looking speakers”, **Architettura Sonora** consists of a creative team of acousticians, engineers, architects and landscape designers sharing the same enthusiastic vision to redesign the reality of space and landscape through an immersive sound experience. Launched in 2009 as a division of the B&C Speakers Group, one of the largest and most prestigious professional loudspeaker transducer manufacturers in the world, **Architettura Sonora - AS** - is a unique audio brand that has become in no time a pioneer in the sonic industry. Combining unparalleled expertise in design and innovation with the long-standing Italian forte, **AS** is a revolutionary designer of outdoor acoustic experiences, with an increasing imprint in the indoor world.

*Nata con la missione di “ottenere il miglior suono possibile dai più bei moduli sonori”, **Architettura Sonora** è un team creativo di acustici, ingegneri, architetti e paesaggisti che condividono con entusiasmo la stessa visione di ridefinire la percezione dello spazio e del paesaggio attraverso un'esperienza sonora immersiva. Avviata nel 2009 come divisione della B&C Speakers SpA, una tra le maggiori e più importanti aziende produttrici di trasduttori elettroacustici nel mondo, **Architettura Sonora - AS** - è un brand audio unico, in poco tempo divenuto un pioniere nel settore acustico. Combinando competenze senza pari in design e innovazione con i punti di forza della tradizione italiana, **AS** è un creatore rivoluzionario di esperienze sonore outdoor, con un'impronta sempre più forte nel mondo indoor.*





## Architettura Sonora

## The natural shape of sound

Relying on a highly-proficient team of researchers and developers, we shape technology to create the most beautiful and seductive forms of environmental loudspeakers that we like to consider real “spatial instruments”.

Each one of our sound modules is the result of a meticulous “dialogue” between form and function, physics of sound and design aesthetics. We start by a combination of desired reflection and sound projection with an aim to optimize the acoustic experience through a perfect marriage of shape and sound. The next step involves an evolutionary process of distillation that aims at eliminating any feature unnecessary to the sound modules, to arrive to the final **natural shape of sound**.

The orchestration of different **AS** speakers varying in shape, directionality and material, recreates a natural pattern of sound enveloping the listener in a mesmerizing multi-sensory experience and transporting him in a journey of well-being and pleasure. Each **AS** sound module, individually and meticulously produced by skilled craftsmen, is a unique piece of art highly distinguished by sound quality, design innovation, and tactile features rarely associated with speaker design.

*Contando su un abile team di ricercatori e sviluppatori, siamo in grado di modellare la tecnologia per creare le più belle e seducenti forme di diffusori ambientali, che consideriamo una sorta di "strumenti spaziali". Ognuno dei nostri moduli sonori è il risultato di un "dialogo" scrupoloso tra forma e funzione, tra fisica del*

*suono e design. Partiamo da una combinazione di riflessioni e proiezioni del suono desiderate con l'obiettivo di ottimizzare l'esperienza acustica attraverso un perfetto connubio di forma e suono. Un processo evolutivo di distillazione mira poi a eliminare dai moduli tutto ciò che è inutile alla loro funzione, per arrivare alla **natural shape of sound**.*





*L'orchestrazione dei diversi modelli di speaker **AS**, vari in termini di forma, direzionalità e materiali, ricrea un pattern di suono naturale che avvolge l'ascoltatore in un'affascinante esperienza multi-sensoriale e lo trasporta in un viaggio di puro benessere e piacere. Ogni modulo sonoro **AS**, individualmente e meticolosamente prodotta da*

*abili artigiani, è un pezzo unico profondamente contraddistinto dall'eccellente qualità del suono, dal design innovativo e da qualità tattili raramente associabili al design di speakers.*





Celebrating clear-cut lines and discreet elegance, the VD-line is available in various combinations of materials, offering a wide choice of sound modules ready to harmonize with different landscapes and settings.

*Caratterizzata da un'eleganza lineare e discreta, la VD-line è disponibile in varie combinazioni di materiali, che le consente di armonizzarsi in diversi ambienti.*





An omnidirectional sound module characterized by a full and warm tonal balance, the Cube represents the top of the **AS** range. Available in both full-range and sub version, it is ideal for environments requiring superior sound quality and elegant design.

> Cube in Zebrino marble, brushed stainless steel base.

> pag. 11  
Cube in Travertine stone, oxidized brass base.

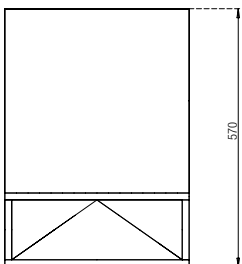
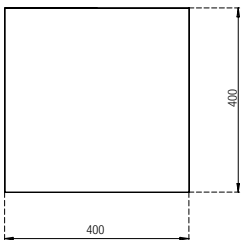
*Modulo sonoro omnidirezionale, caratterizzato da un bilanciamento tonale molto caldo e pieno, il Cubo rappresenta il top della gamma **AS**. Disponibile sia nella versione full-range che sub, è ideale per ambienti che richiedono un'eccellente qualità acustica e design raffinato.*

> *Cubo in marmo Zebrino, base in acciaio inox spazzolato.*

> pag. 11  
*Cubo in Travertine, base in ottone ossidato.*



**CUBE**



**FULL RANGE  
SOUND OUTPUT**

**Speaker type**  
6" dual-concentric speaker

**Nominal impedance**  
8 Ω

**Cross Over**  
two way on board

**Frequency range**  
38-20.000 Hz (-6dB)

**Sensitivity (1W-1m)**  
89 dB

**Speaker Max Power**  
300W

**Speaker RMS Power**  
150W

**Recommended amplifier power**  
200W (Class D)

**SUBWOOFER  
SOUND OUTPUT**

**Speaker type**  
6" Woofer

**Nominal impedance**  
8 Ω

**Cross Over**  
no crossover on board - DSP  
needed (HP 35 Hz 12dB/oct  
min; LP 120 Hz 12 dB/oct min)

**Frequency range**  
38-150 Hz (-6dB)

**Sensitivity (1W-1m)**  
89 dB

**Speaker Max Power**  
300W

**Speaker RMS Power**  
150W

**Recommended amplifier power**  
200W (Class D)

**SPECIFICATIONS**

**Material**  
marbles, travertine, Corian,  
wood

**Base material**  
brass, stainless steel, metal,  
gunmetal

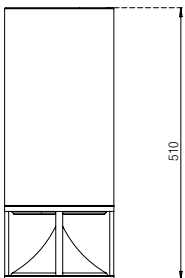
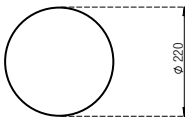
**Dimensions**  
400 x 400 x 570 mm

**Weight**  
139 kg (marble)

**Design**  
Vladimir Djurovic



## CYLINDER



### FULL RANGE SOUND OUTPUT

**Speaker type**  
6" dual-concentric speaker

**Nominal impedance**  
8  $\Omega$

**Cross Over**  
two way on board

**Frequency range**  
55-20.000 Hz (-6dB)

**Sensitivity (1W-1m)**  
89 dB

**Speaker Max Power**  
300W

**Speaker RMS Power**  
150W

**Recommended amplifier power**  
200W (Class D)

### SUBWOOFER SOUND OUTPUT

**Speaker type**  
6" Woofer

**Nominal impedance**  
8  $\Omega$

**Cross Over**  
no crossover on board - DSP  
needed (HP 35 Hz 12dB/oct  
min; LP 120 Hz 12 dB/oct min)

**Frequency range**  
50-150 Hz (-6dB)

**Sensitivity (1W-1m)**  
89 dB

**Speaker Max Power**  
300W

**Speaker RMS Power**  
150W

**Recommended amplifier power**  
200W (Class D)

### SPECIFICATIONS

**Material**  
marbles, travertine, granite,  
Corian, raw and glazed  
terracotta, wood, leather,  
stainless steel

**Base material**  
aluminum, brass, stainless steel  
or gunmetal

**Dimensions**  
220 x 510 mm

**Weight**  
25 kg (marble)

**Design**  
Vladimir Djurovic



Distinguished by a warm and clean tonal balance, the Cylinder is an omnidirectional sound module, full-range or subwoofer. Its balanced dimensions and neat lines make it ideal for any setting, both indoor and outdoor.

> Cylinder in Bardiglio marble with brushed stainless steel base.

> pag 12  
Cylinder in Graphite marble.

*Caratterizzato da suoni caldi e puliti, il Cilindro è un modulo sonoro omnidirezionale, full-range o subwoofer. Le sue dimensioni equilibrate e la purezza delle linee rendono il Cilindro ideale per ogni tipo di ambiente, indoor and outdoor.*

> Cilindro in marmo bardiglio con base in acciaio inox spazzolato.

> pag 12  
Cilindro in Grafite



The "baby" of the cylinder family, the Short Cylinder comes in compact size, full-range and subwoofer, without compromise on quality and performance.

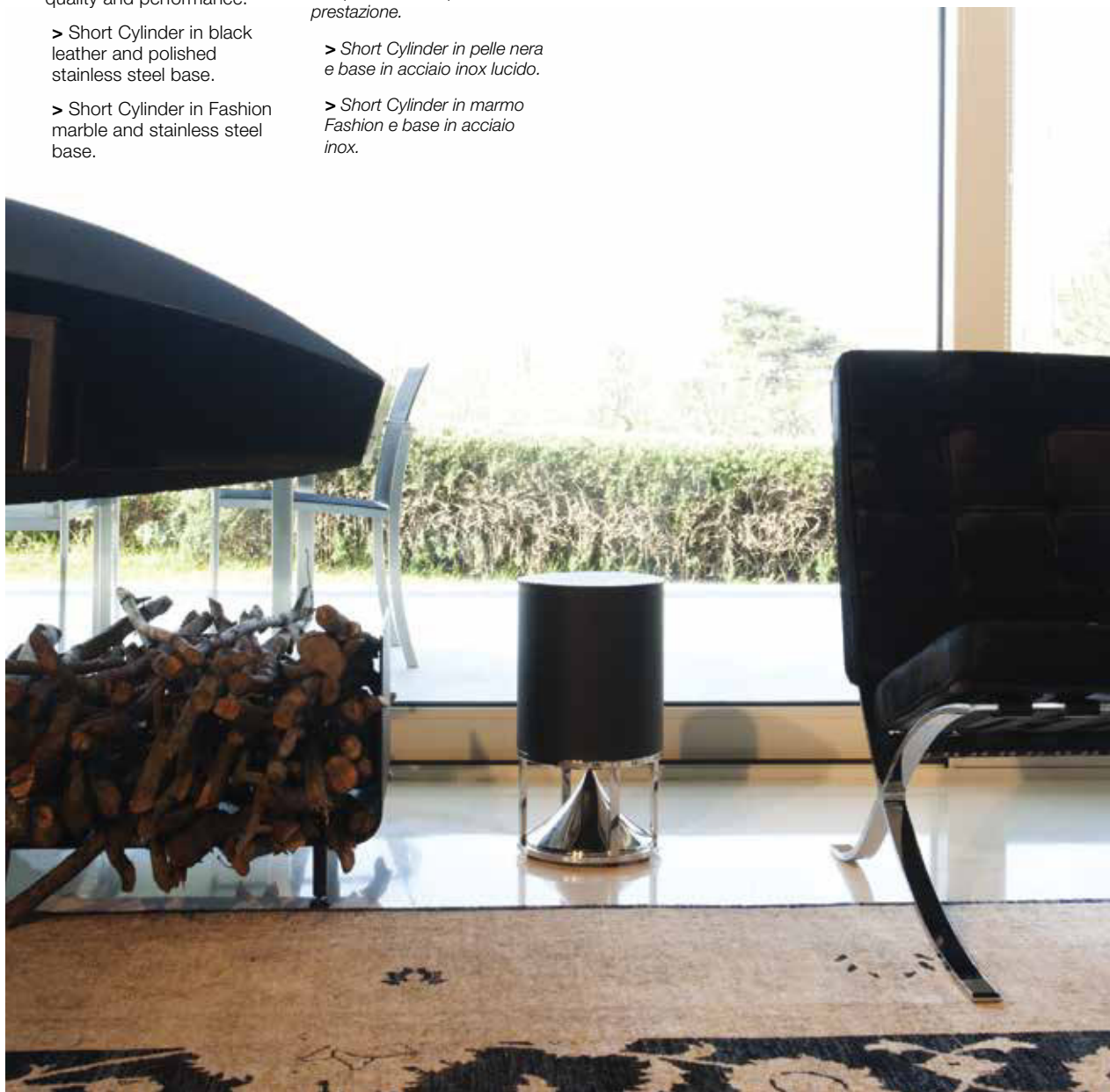
> Short Cylinder in black leather and polished stainless steel base.

> Short Cylinder in Fashion marble and stainless steel base.

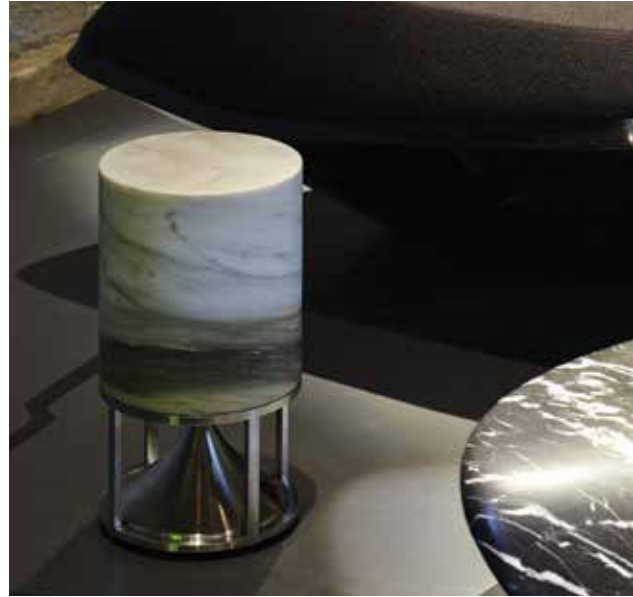
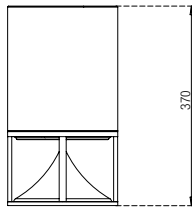
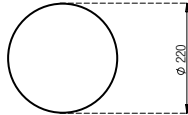
*Il "piccolo" della famiglia dei cilindri, lo Short Cylinder è disponibile in formato compatto, full-range o subwoofer, senza compromessi su qualità e prestazione.*

*> Short Cylinder in pelle nera e base in acciaio inox lucido.*

*> Short Cylinder in marmo Fashion e base in acciaio inox.*







SHORT CYLINDER

FULL RANGE  
SOUND OUTPUT

**Speaker type**  
6" dual-concentric speaker

**Nominal impedance**  
8 Ω

**Cross Over**  
two way on board

**Frequency range**  
58-20.000 Hz (-6dB)

**Sensitivity (1W-1m)**  
89 dB

**Speaker Max Power**  
300W

**Speaker RMS Power**  
150W

**Recommended amplifier power**  
200W (Class D)

SUBWOOFER  
SOUND OUTPUT

**Speaker type**  
6" Woofer

**Nominal impedance**  
8 Ω

**Cross Over**  
no crossover on board - DSP needed (HP 35 Hz 12dB/oct min; LP 120 Hz 12 dB/oct min)

**Frequency range**  
50-150 Hz (-6dB)

**Sensitivity (1W-1m)**  
89 dB

**Speaker Max Power**  
300W

**Speaker RMS Power**  
150W

**Recommended amplifier power**  
200W (Class D)

SPECIFICATIONS

**Material**  
marbles, travertine, granite, Corian, raw and glazed terracotta, wood, leather, stainless steel

**Base material**  
aluminum, brass, stainless steel or gunmetal

**Dimensions**  
220 x 370 mm

**Weight**  
21 kg (marble)

**Design**  
Vladimir Djurovic



> Cylinder in walnut  
Travertine, oxidized brass  
base.

> pag 16  
Cylinder in Etruscan Clay  
from the Raw collection,  
black oxidized aluminum  
base.

> *Cilindro in Travertino  
noce, base in ottone  
ossidato*

> *pag 16  
Cilindro in Terra Etrusca  
della collezione Raw, base  
il alluminio nero ossidato.*





Classic lines and clean detailing make the Sphere an **AS** design classic. Available in a wide range of materials and finishing, full-range or subwoofer, with two different options for the base design, the Sphere adapts to any type of environment.

Omnidirectional sound module characterized by a full and warm tonal balance.

> Sphere\_360 in classic travertine and stainless steel base.

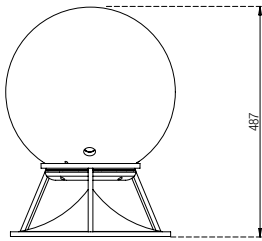
> pag. 19  
Sphere\_360 in Moss pigmented clay from the Raw collection.

*Linee classiche e dettagli contemporanei rendono la Sfera un classico del design **AS**. Disponibile in un'ampia gamma di materiali e finiture, full-range o subwoofer, con due opzioni di design per la base, la Sfera si adatta a qualsiasi tipo di ambiente.*

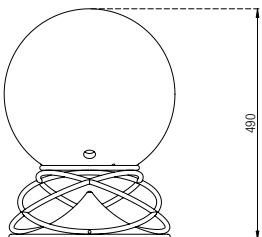
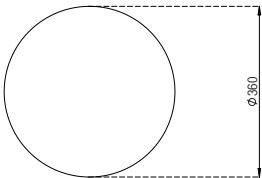
*Modulo sonoro omnidirezionale caratterizzato da un bilanciamento dei toni caldo e pieno.*

> Sfera\_360 in travertino classico con base in acciaio inox.

> pag. 19  
Sfera\_360 in terra colorata Muschio della collezione Raw.



SPHERE\_360



FULL RANGE  
SOUND OUTPUT

**Speaker type**  
6" dual-concentric speaker

**Nominal impedance**  
8 Ω

**Cross Over**  
two way on board

**Frequency range**  
50-20.000 Hz (-6dB)

**Sensitivity (1W-1m)**  
89 dB

**Speaker Max Power**  
300W

**Speaker RMS Power**  
150W

**Recommended amplifier power**  
200W (Class D)



SUBWOOFER  
SOUND OUTPUT

**Speaker type**  
6" Woofer

**Nominal impedance**  
8 Ω

**Cross Over**  
no crossover on board - DSP  
needed (HP 35 Hz 12dB/oct  
min; LP 120 Hz 12 dB/oct min)

**Frequency range**  
42-150 Hz (-6dB)

**Sensitivity (1W-1m)**  
89 dB

**Speaker Max Power**  
300W

**Speaker RMS Power**  
150W

**Recommended amplifier power**  
200W (Class D)

SPECIFICATIONS

**Material**  
marble, travertine, Galestro  
tuscan terracotta, raw and  
glazed terracotta, alternative  
stones

**Base material**  
iron, stainless steel

**Dimensions**  
∅ 360 x 490 mm

**Weight**  
31 kg (marble)

**Design**  
Architettura Sonora

The different proportions within the classic **AS** lines make the Sphere\_470 the ideal solution when higher performance and volumes are required. Available in both full-range and sub version.

> Sphere\_470 in classic travertine and brass base.

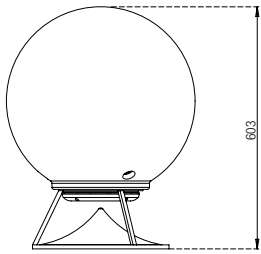
> pag. 21  
Sphere\_470\_Sub in Impruneta Tuscan terracotta and metal base.

*Le proporzioni differenti, all'interno delle linee classiche **AS**, rendono la Sfera\_470 la soluzione ideale quando sono richieste maggiori prestazioni e volumi. Disponibile sia nella versione full-range che sub.*

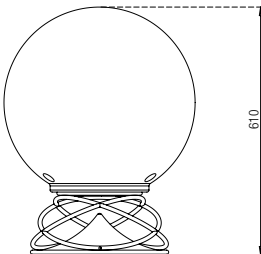
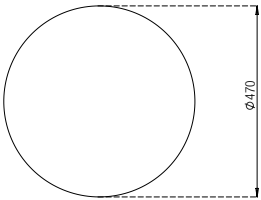
> Sfera\_470 in travertino classico con base in ottone.

> pag. 21  
Sfera\_470\_Sub in terracotta dell'Impruneta e base in metallo.





**SPHERE\_470**



**FULL RANGE  
SOUND OUTPUT**

**Speaker type**  
6" dual-concentric speaker

**Nominal impedance**  
8  $\Omega$

**Cross Over**  
two way on board

**Frequency range**  
50-20.000 Hz (-6dB)

**Sensitivity (1W-1m)**  
89 dB

**Speaker Max Power**  
300W

**Speaker RMS Power**  
150W

**Recommended amplifier power**  
200W (Class D)

**SUBWOOFER  
SOUND OUTPUT**

**Speaker type**  
6" Woofer

**Nominal impedance**  
8  $\Omega$

**Cross Over**  
no crossover on board - DSP  
needed (HP 35 Hz 12dB/oct  
min; LP 120 Hz 12 dB/oct min)

**Frequency range**  
40-150 Hz (-6dB)

**Sensitivity (1W-1m)**  
89 dB

**Speaker Max Power**  
300W

**Speaker RMS Power**  
150W

**Recommended amplifier power**  
200W (Class D)

**SPECIFICATIONS**

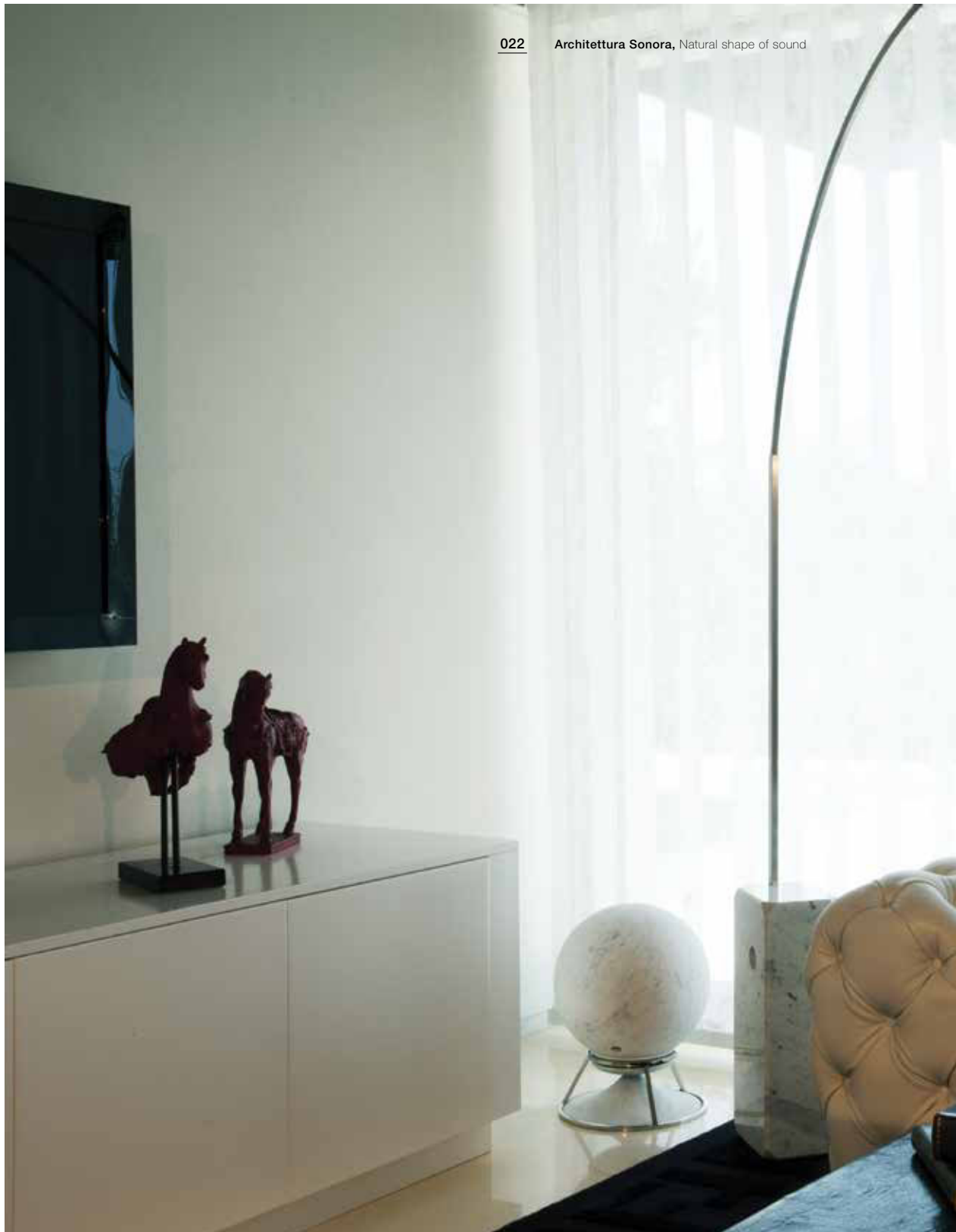
**Material**  
Impruneta tuscan terracotta,  
travertine, marble, raw and  
glazed terracotta, alternative  
stones

**Base material**  
iron, stainless steel

**Dimensions**  
 $\varnothing$  470 x 610 mm

**Weight**  
25 kg (terracotta)

**Design**  
Architettura Sonora





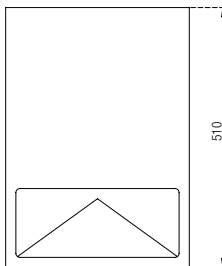
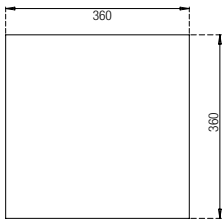
> Sphere\_360 in  
sandblasted white Carrara  
marble and stainless steel  
base.

> *Sphere\_360 in bianco  
Carrara sabbato, base in  
acciaio inox.*





**BLOCK**



**FULL RANGE  
SOUND OUTPUT**

**Speaker type**  
6" dual-concentric speaker

**Nominal impedance**  
8 Ω

**Cross Over**  
two way on board

**Frequency range**  
38-20.000 Hz (-6dB)

**Sensitivity (1W-1m)**  
89 dB

**Speaker Max Power**  
300W

**Speaker RMS Power**  
150W

**Recommended amplifier power**  
200W (Class D)

**SUBWOOFER  
SOUND OUTPUT**

**Speaker type**  
6" Woofer

**Nominal impedance**  
8 Ω

**Cross Over**  
no crossover on board - DSP  
needed (HP 35 Hz 12dB/oct  
min; LP 120 Hz 12 dB/oct min)

**Frequency range**  
38-150 Hz (-6dB)

**Sensitivity (1W-1m)**  
89 dB

**Speaker Max Power**  
300W

**Speaker RMS Power**  
150W

**Recommended amplifier power**  
200W (Class D)

**SPECIFICATIONS**

**Material**  
teak wood, oak wood, iroko

**Base material**  
teak wood, oak wood, iroko

**Dimensions**  
360 x 360 x 510 mm

**Weight**  
20 kg

**Design**  
Architettura Sonora

The Block is the first “all wood” **AS** omnidirectional sound module, characterized by clean lines and exceptional detailing. The continuity between body and base makes it a beautiful sound-carved element.

> Block in teak wood

*Il Block è il primo modulo sonoro omnidirezionale **AS** “tutto in legno”, caratterizzato da linee pulite e dettagli unici. La continuità tra il corpo e la base lo rende uno splendido elemento scolpito dal suono.*

> *Block in legno di teak*



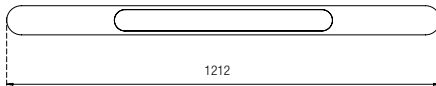


Clean lines and elegance distinguishing the VD-line characterize the suspended sound module Pergola, available in both Line-array and Point-source versions. Ideal for both indoor and outdoor when a superior quality and definition of sound are required.

*L'eleganza delle linee che contraddistingue la VD-line si ritrova nel modulo sonoro sospeso Pergola, disponibile sia nella versione Line-array che nella versione Point-source. Ideale sia indoor che outdoor quando si richiede una qualità e definizione del suono superiore.*



PERGOLA



**LINE ARRAY  
SOUND OUTPUT**

- Speaker type**  
2" speakers
- Nominal impedance**  
4 Ω
- Cross Over**  
DSP needed
- Frequency range**  
150-20.000 Hz (-6dB)
- Sensitivity (1W-1m)**  
90 dB
- Speaker Max Power**  
65W
- Speaker RMS Power**  
130W
- Recommended amplifier power**  
100W (Class D)

**POINT SOURCE  
SOUND OUTPUT**

- Speaker type**  
2" speakers; High Freq; horn loaded driver
- Nominal impedance**  
4 Ω
- Cross Over**  
crossover on board  
Hi-Pass external filter at 150Hz  
12dB/oct required
- Frequency range**  
150-20.000 Hz (-6dB)
- Sensitivity (1W-1m)**  
90 dB
- Speaker Max Power**  
60W
- Speaker RMS Power**  
120W
- Recommended amplifier power**  
100W (Class D)

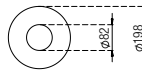
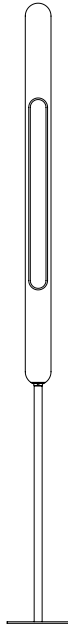
**SPECIFICATIONS**

- Material**  
carbon fiber, black or white
- Mechanic material**  
stainless steel
- Dimensions**  
82 x 1212 mm
- Weight**  
3 kg
- Design**  
Vladimir Djurovic



The VD-line is completed by the Hedge, available in both Line-array and Point-source versions, either floor-standing or suspended, to offer the flexibility and versatility AS products are famous for.

*La VD-line si completa con il modulo Hedge, disponibile nella versione Line-array e nella versione Point-source, sia da terra sia sospeso, per offrire la flessibilità e versatilità che contraddistinguono i prodotti AS.*



**HEDGE**

**LINE ARRAY  
SOUND OUTPUT**

**Speaker type**  
2" speakers

**Nominal impedance**  
4 Ω

**Cross Over**  
DSP needed

**Frequency range**  
150-20.000 Hz (-6dB)

**Sensitivity (1W-1m)**  
90 dB

**Speaker Max Power**  
65W

**Speaker RMS Power**  
130W

**Recommended amplifier power**  
100W (Class D)

**POINT SOURCE  
SOUND OUTPUT**

**Speaker type**  
2" speakers; High Freq; horn loaded driver

**Nominal impedance**  
4 Ω

**Cross Over**  
crossover on board  
Hi-Pass external filter at 150Hz  
12dB/oct required

**Frequency range**  
150-20.000 Hz (-6dB)

**Sensitivity (1W-1m)**  
90 dB

**Speaker Max Power**  
60W

**Speaker RMS Power**  
120W

**Recommended amplifier power**  
100W (Class D)

**SPECIFICATIONS**

**Material**  
carbon fiber, black or white

**Base material**  
stainless steel

**Dimensions**  
82 x 1212 mm

**Weight**  
3 kg

**Design**  
Vladimir Djurovic





Small Drops and Pergola  
suspended sound modules:  
simple and clean shapes  
harmonizing and blending in  
the architectural settings.

*Un sistema di moduli sonori  
sospesi Small Drops e  
Pergola: forme semplici e  
pulite che si armonizzano e  
sfumano nell'ambiente.*





## DROP

### SOUND OUTPUT

**Speaker type**  
6" dual-concentric speaker

**Nominal impedance**  
8  $\Omega$

**Cross Over**  
two way on board

**Frequency range**  
50-20.000 Hz (-6dB)

**Sensitivity (1W-1m)**  
89 dB

**Speaker Max Power**  
300W

**Speaker RMS Power**  
150W

**Recommended amplifier power**  
200W (Class D)

### SPECIFICATIONS

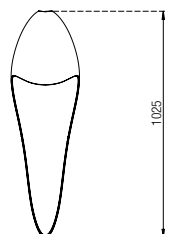
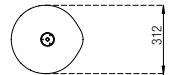
**Material**  
composite material available in  
black or white

**Mechanic material**  
stainless steel

**Dimensions**  
1025 x 312 x 314 mm

**Weight**  
6 kg


**Design**  
Architettura Sonora



Highly directional  
suspended sound module  
with neutral tonal balance,  
the Drop is ideal for  
creating areas with a high  
concentration of real sound,  
both indoor and outdoor.

*Modulo sonoro sospeso  
altamente direzionale con  
bilanciamento tonale neutro, il  
Drop è ideale per creare zone  
con alta concentrazione di  
suono, sia indoor che outdoor.*



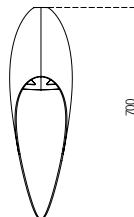


The nature-inspired and clean design of the Small Drop makes it an ideal application in various settings. The Small Drop is a satellite-suspended sound module, highly directional with a bright tonal balance.

*Il design naturalistico e pulito dello Small Drop lo rende ideale per applicazioni in diversi ambienti. Lo Small Drop è un modulo sonoro satellite sospeso, altamente direzionale con bilanciamento tonale brillante e luminoso.*



SMALL DROP



## SOUND OUTPUT

### Speaker type

5" dual-concentric speaker

### Nominal impedance

8  $\Omega$

### Cross Over

DSP needed for 2 channel ampli

### Frequency range

70-20.000 Hz (-6dB)

### Sensitivity (1W-1m)

89 dB

### Speaker Max Power

180W

### Speaker RMS Power

90W

### Recommended amplifier power

150W (Class D)

## SPECIFICATIONS

### Material

composite material available in black or white

### Mechanic material

stainless steel

### Dimensions

700 x 207 x 207 mm

### Weight

4 kg

### Design

Architettura Sonora



The Helmet is a suspended sound module characterized by a nicely warm tonal balance. Its inner reflecting surface allows the sound to be directed in focused areas, achieving a directional sound emission.

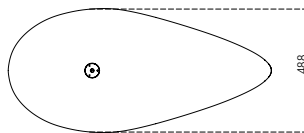
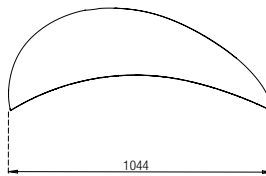
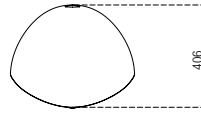
*L'Helmet è un modulo sonoro sospeso caratterizzato da un bilanciamento dei toni piacevolmente caldo. La superficie riflettente interna della scocca permette di dirigere il suono in maniera mirata ottenendo un'emissione sonora direzionale*





HELMET

**037**    **Helmet**



**SOUND OUTPUT**

**Speaker type**  
6" dual-concentric speaker

**Nominal impedance**  
8  $\Omega$

**Cross Over**  
two way on board

**Frequency range**  
50-20.000 Hz (-6dB)

**Sensitivity (1W-1m)**  
89 dB

**Speaker Max Power**  
300W

**Speaker RMS Power**  
150W

**Recommended amplifier power**  
200W (Class D)

**SPECIFICATIONS**

**Material**  
composite material available in black or white

**Mechanic material**  
stainless steel

**Dimensions**  
1044 x 406 x 488 mm

**Weight**  
10 kg

**Design**  
Architettura Sonora



Innovative material shaped into an organic form, the Small Helmet is a satellite-suspended sound module with a warm tonal balance, distinguished by a directional sound emission.

*Materiale innovativo modellato in una forma organica, lo Small Helmet è un modulo sonoro satellite sospeso, con un bilanciamento tonale caldo, caratterizzato da un'emissione sonora direzionale.*

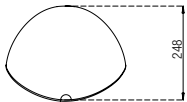




## SMALL HELMET

## SOUND OUTPUT

## SPECIFICATIONS



### Speaker type

5" dual-concentric speaker

### Material

composite material available in black or white

### Nominal impedance

8  $\Omega$

### Mechanic material

stainless steel

### Cross Over

DSP needed for 2 channel ampli

### Dimensions

650 x 250 x 315 mm

### Frequency range

70-20.000 Hz (-6dB)

### Weight

5 kg

### Sensitivity (1W-1m)

89 dB

### Design

Architettura Sonora

### Speaker Max Power

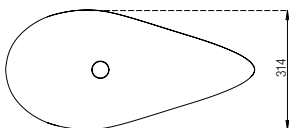
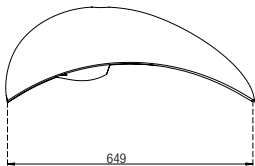
180W

### Speaker RMS Power

90W

### Recommended amplifier power

150W (Class D)





## SOUND OUTPUT

### Speaker type

2 x 6" woofer

### Nominal impedance

4  $\Omega$

### Cross Over

no crossover on board - DSP needed (HP 35 Hz 12dB/oct min; LP 120 Hz 12 dB/oct min)

### Frequency range

38-150 Hz (-6dB)

### Sensitivity (1W-1m)

90 dB

### Speaker Max Power

600W

### Speaker RMS Power

300W

### Recommended amplifier power

500W (Class D)

## SPECIFICATIONS

### Material

composite material available in black or white

### Mechanic material

stainless steel

### Dimensions

1283 x 310 x 285 mm

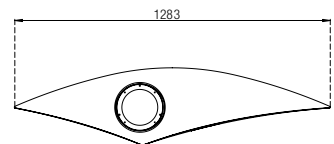
### Weight

11 kg

### Design

Architettura Sonora

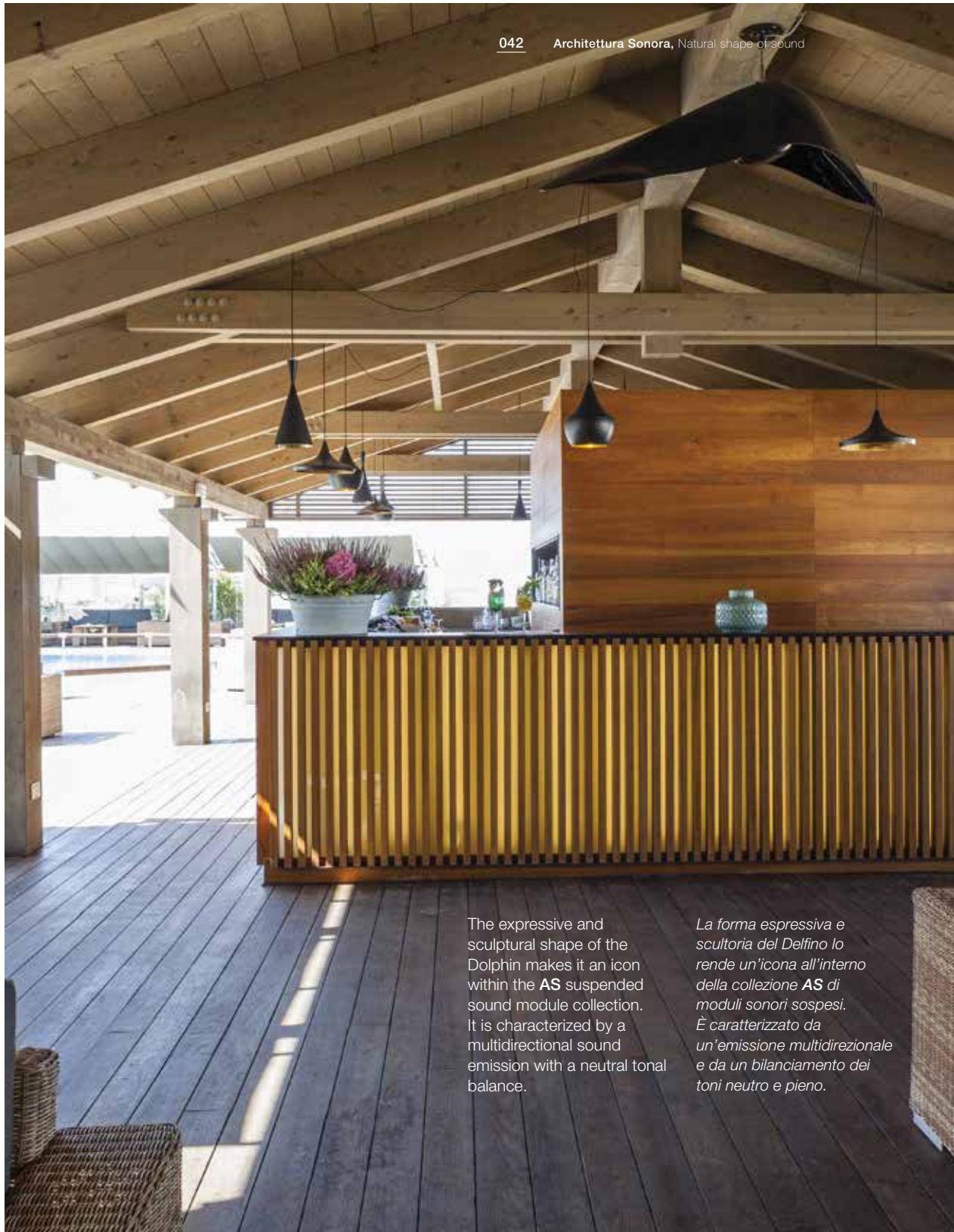
## SHARK



Strongly characterized by its expressive and organic design, the Shark is unique in its kind: a suspended subwoofer ideal for enhancing and boosting any sound experience, both indoor and outdoor.

*Fortemente caratterizzato da un design espressivo e organico, lo Shark è unico nel suo genere: un subwoofer sospeso ideale per potenziare e valorizzare qualsiasi esperienza sonora, sia indoor sia outdoor.*



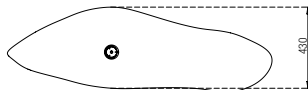
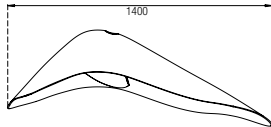


The expressive and sculptural shape of the Dolphin makes it an icon within the **AS** suspended sound module collection. It is characterized by a multidirectional sound emission with a neutral tonal balance.

*La forma espressiva e scultoria del Delfino lo rende un'icona all'interno della collezione **AS** di moduli sonori sospesi. È caratterizzato da un'emissione multidirezionale e da un bilanciamento dei toni neutro e pieno.*



## DOLPHIN



## SOUND OUTPUT

**Speaker type**  
6" dual-concentric speaker

**Nominal impedance**  
8  $\Omega$

**Cross Over**  
two way on board

**Frequency range**  
50-20.000 Hz (-6dB)

**Sensitivity (1W-1m)**  
89 dB

**Speaker Max Power**  
300W

**Speaker RMS Power**  
150W

**Recommended amplifier power**  
200W (Class D)

## SPECIFICATIONS

**Material**  
composite material available in black or white

**Mechanic material**  
stainless steel

**Dimensions**  
1400 x 505 x 430 mm

**Weight**  
11 kg

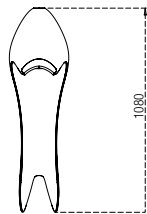
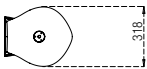
**Design**  
Architettura Sonora



SNAIL

The Snail is a suspended sound module celebrating organic lines that define its peculiar directional emission. It is characterized by a pleasantly warm tonal balance.

*Lo Snail è un modulo sonoro sospeso, dalle forme organiche che ne definiscono la peculiare direzionalità. È caratterizzato da un bilanciamento dei toni piacevolmente caldo.*



## SOUND OUTPUT

**Speaker type**  
6" dual-concentric speaker

**Nominal impedance**  
8  $\Omega$

**Cross Over**  
two way on board

**Frequency range**  
50-20.000 Hz (-6dB)

**Sensitivity (1W-1m)**  
89 dB

**Speaker Max Power**  
300W

**Speaker RMS Power**  
150W

**Recommended amplifier power**  
200W (Class D)

## SPECIFICATIONS


**Material**  
composite material available in  
black or white

**Mechanic material**  
stainless steel

**Dimensions**  
1080 x 357 x 318 mm

**Weight**  
6 kg

**Design**  
Architettura Sonora

A photograph of a rooftop lounge at night. The scene is illuminated by warm, ambient lighting. In the foreground, a woman with long blonde hair, wearing a white sleeveless top and black pants, is seated on a light-colored sofa, looking towards the right. To her right, a tall, white, conical floor-standing heater is lit up. In the background, several other people are seated at tables, some of which are also lit up. The ceiling features several large, white, curved sound modules suspended from it. The overall atmosphere is elegant and modern.

A combination of suspended and floor-standing **AS**'s sound modules is no doubt one of the standout features of this elegant rooftop venue.

*Una combinazione di moduli sonori **AS** sospesi e da pavimento è senza dubbio una delle caratteristiche distintive di questa elegante terrazza panoramica.*





The Yoyo is a satellite floor-standing sound module, highly directional and characterized by a bright tonal balance.

> Yoyo in bardiglio marble

> pag. 49

Yoyo in Tuscan terracotta

*Lo Yoyo è un modulo sonoro satellite da terra, altamente direzionale con bilanciamento tonale brillante e luminoso.*

> *Yoyo in marmo bardiglio*

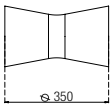
> *pag. 49*

*Yoyo in terracotta*





## YOYO



## SOUND OUTPUT

**Speaker type**  
3" speaker

**Nominal impedance**  
8  $\Omega$

**Cross Over**  
High spl: needed DSP high pass  
400Hz 12dB/oct min

**Frequency range**  
250-20.000 Hz (-6dB)

**Sensitivity (1W-1m)**  
94 dB

**Speaker Max Power**  
24W

**Speaker RMS Power**  
12W

**Recommended amplifier power**  
20W (Class D)

## SPECIFICATIONS

**Material**  
Tuscan terracotta, marble,  
travertine, alternative stones

**Base material**  
Metal

**Dimensions**  
 $\varnothing$  210 x 350 mm

**Weight**  
6 kg

**Design**  
Architettura Sonora



## BIG YOYO

### SOUND OUTPUT

**Speaker type**  
10" woofer+MF/HF dual-  
concentric horn loaded driver

**Nominal impedance**  
8  $\Omega$

**Cross Over**  
needed DSP for 3 channel ampli

**Frequency range**  
38-20.000 Hz (-6dB)

**Sensitivity (1W-1m)**  
97 dB

**Speaker Max Power**  
600W

**Speaker RMS Power**  
300W (woofer)

**Recommended amplifier power**  
400W (Class D)

### SPECIFICATIONS

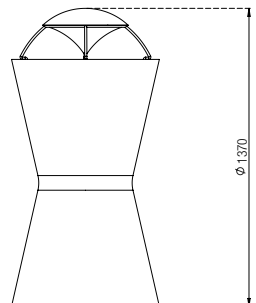
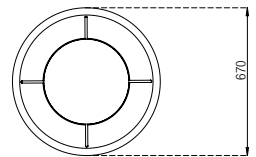
**Material**  
Impruneta tuscan terracotta

**Mechanic material**  
Metal

**Dimensions**  
 $\varnothing$  670 x 1370 mm

**Weight**  
150 kg

**Design**  
Architettura Sonora





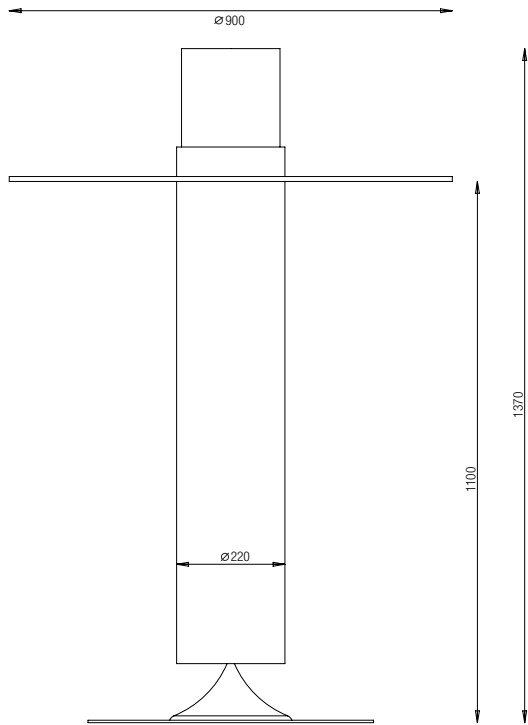
The Big Yoyo is a “tough” 3-way full-range floor-standing sound module, distinguished by an omnidirectional sound emission and a bright and strong tonal balance.

*Il Big Yoyo è un “duro”, un modulo sonoro da pavimento full-range a 3 vie, caratterizzata da un'emissione sonora omnidirezionale e un bilanciamento tonale forte e brillante.*



Apollo is an indoor and outdoor bioethanol fireplace. With a base designed to propagate sound, it is an omnidirectional sound diffuser that creates a warm and pleasant atmosphere of comfort and relaxation. Suitable for any gathering venue.

*Apollo è un caminetto da interni ed esterni a bioetanolo. Con una base progettata per propagare il suono, è un diffusore sonoro omnidirezionale, in grado di creare una piacevole atmosfera di benessere e relax. Adatto a qualsiasi luogo di incontro e accoglienza.*



## APOLLO

### SOUND OUTPUT

**Speaker type**  
6" dual-concentric speaker

**Nominal impedance**  
8  $\Omega$

**Cross Over**  
two way on board

**Frequency range**  
55-20.000 Hz (-6dB)

**Sensitivity (1W-1m)**  
89 dB

**Speaker Max Power**  
300W

**Speaker RMS Power**  
150W

**Recommended amplifier power**  
200W (Class D)

### SPECIFICATIONS

**Material**  
Steel and glass, black or white

**Base material**  
steel

**Dimensions**  
 $\varnothing$ 900 x 1370 mm

**Weight**  
35 kg

**Design**  
Acquaefuoco &  
Architettura Sonora





From landscape to landscape, the tall Cylinder in Pietra Serena immerses in aromatic bushes to complete and enhance the natural sound experience.

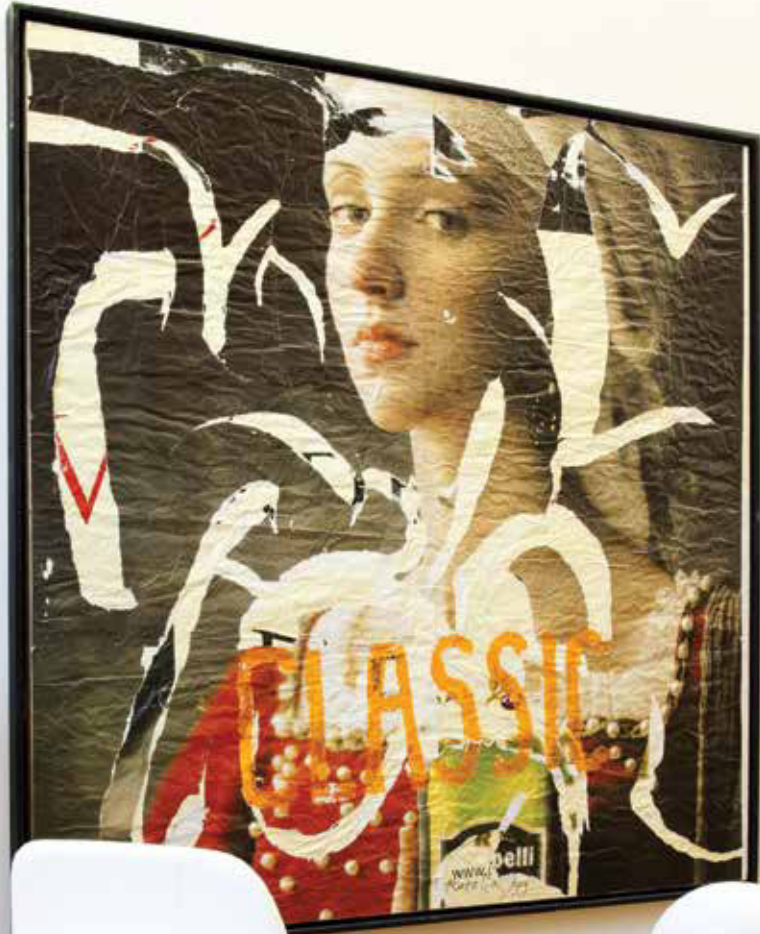
*Dalla natura alla natura, il Cilindro in Pietra Serena immerso in cespugli aromatici, per completare e ottimizzare l'esperienza del suono naturale.*

Classic lines and clean detailing make the Sphere an **AS** design classic.

> Sphere\_360 in sandblasted Carrara white marble and stainless steel base.

*Linee classiche e dettagli contemporanei rendono la Sfera un classico del design **AS**.*

> *Sfera\_360 in marmo bianco Carrara sabbato e base in acciaio inox.*





## AMPLIFIERS

**Architettura Sonora** has developed the AS-A Series amplifiers, a complete line of high performance tools, Class D – ICEpower Technology for installations that require premium sound quality, multi-channel configurations and flexibility.

Versatile, lightweight, and highly energy-efficient, AS-A Series amplifiers are designed, engineered and manufactured to the industry's highest quality standards, providing advanced features and flexibility required for the most challenging sound applications. Our unique line of **Hybrid** amplifiers can provide different output power within the same chassis, guaranteeing maximum flexibility and unmatched performance when installed with **Architettura Sonora's** sound modules.

**Architettura Sonora** ha sviluppato la Serie AS-A di amplificatori, una linea completa di strumenti ad alte prestazioni, Classe D - ICEpower Technology, per installazioni che richiedono un'ottima qualità audio, configurazioni multi-canale e massima flessibilità.

Versatile, leggera e ad alta efficienza energetica, la Serie AS-A di amplificatori è progettata, ingegnerizzata e realizzata secondo i più alti standard di qualità del settore, fornendo le funzionalità avanzate e la flessibilità necessarie per le applicazioni audio più impegnative. La linea di amplificatori **Hybrid**, unica nel suo genere, è in grado di fornire all'interno dello stesso chassis potenze di uscita diverse, garantendo la massima flessibilità e prestazioni senza pari in installazioni con moduli sonori di **Architettura Sonora**.

> Cylinder in Etruscan Clay from the Raw collection, black oxidized aluminum base.

> *Cilindro in Terra Etrusca della collezione Raw, base in alluminio nero ossidato.*







Cube



Cylinder



Short Cylinder



Sphere\_360



Sphere\_470



Block

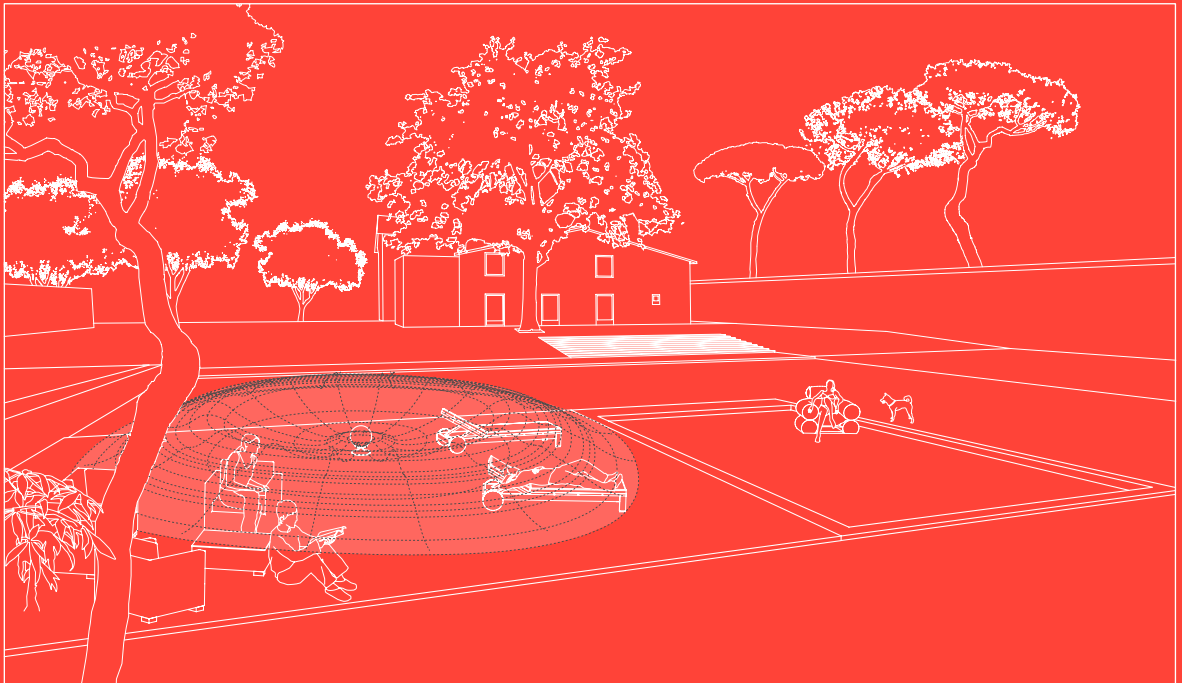


Apollo



Big Yoyo

## OMNIDIRECTIONAL





Dolphin



Drop



Small Drop



Helmet



Small Helmet



Shark

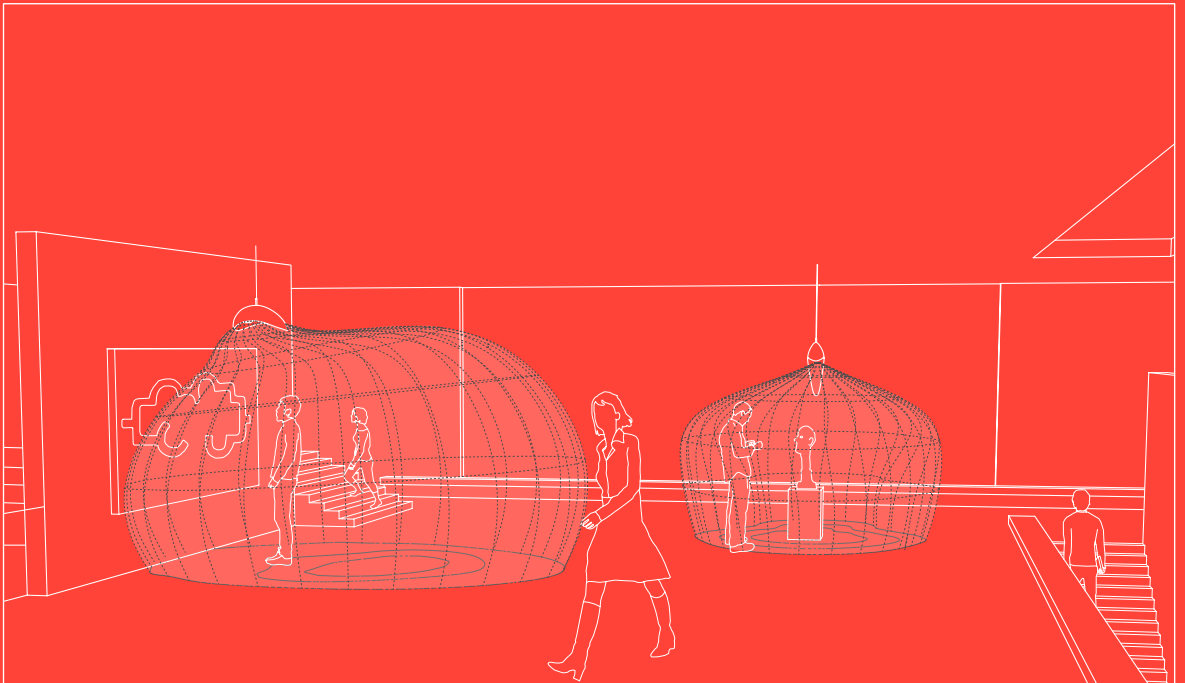


Snail



Yoyo

## DIRECTIONAL





Pergola

Hedge  
floorstandingHedge  
suspended

## LINE ARRAY







Pergola



Hedge  
floorstanding



Hedge  
suspended

## POINT SOURCE

